

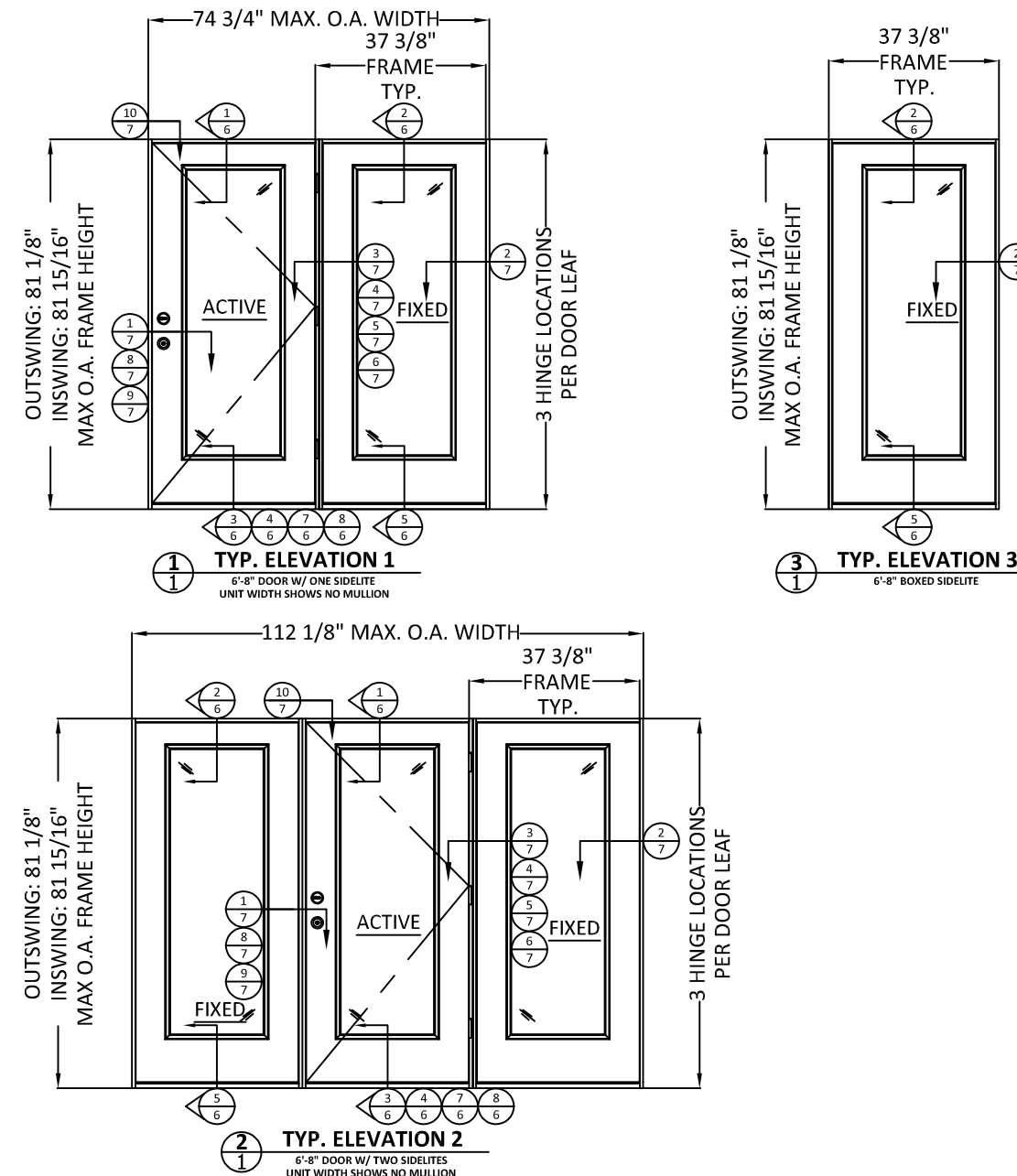
# JELD-WEN® WINDOWS & DOORS

## DESIGN PRO / SMOOTH PRO FULL LITE IMPACT APPROVED

FOR USE IN THE HIGH VELOCITY HURRICANE ZONE (HVHZ)

### GENERAL NOTES:

- THE PRODUCT SHOWN HEREIN IS DESIGNED AND MANUFACTURED TO COMPLY WITH THE CURRENT FLORIDA BUILDING CODE (FBC), INCLUDING HVHZ AND HAS BEEN EVALUATED ACCORDING TO THE FOLLOWING:
  - TAS 201-94
  - TAS 202-94
  - TAS 203-94
- ADEQUACY OF THE EXISTING STRUCTURAL CONCRETE/MASONRY OR 2X FRAMING AS A MAIN WIND FORCE RESISTING SYSTEM CAPABLE OF WITHSTANDING AND TRANSFERRING APPLIED PRODUCT LOADS TO THE FOUNDATION IS THE RESPONSIBILITY OF THE ENGINEER OR ARCHITECT OF RECORD FOR THE PROJECT OF INSTALLATION.
- THE INSTALLATION DETAILS DESCRIBED HEREIN ARE GENERIC AND MAY NOT REFLECT ACTUAL CONDITIONS FOR A SPECIFIC SITE. IF SITE CONDITIONS CAUSE INSTALLATION TO DEVIATE FROM THE REQUIREMENTS DETAILED HEREIN, A LICENSED ENGINEER OR ARCHITECT SHALL PREPARE SITE SPECIFIC DOCUMENTS FOR USE WITH THIS DOCUMENT.
- APPROVED IMPACT PROTECTIVE SYSTEM **IS NOT REQUIRED** ON THIS PRODUCT IN AREAS REQUIRING IMPACT RESISTANCE.
- GLASS MEETS THE REQUIREMENTS OF ASTM E 1300 GLASS CHARTS. SEE SHEET 4 FOR GLAZING DETAILS.
- FULL LITE APPROVAL COVERS USE OF FRACTIONAL GLAZING, INCLUDING INTERNAL GRID, BLINDS BETWEEN GLASS, DECORATIVE, EXTERNAL WROUGHT IRON AND RADIUS (SHAPED) LITES.
- NOTE: OPERATING AFCO H-497 SILL MEETS WATER INFILTRATION AT WATER TEST PRESSURE (WTP) OF 9.75 PSF. FIXED SIDELITE MEETS WATER INFILTRATION AT WTP OF 7.5 PSF. REMAINING SILLS NOT RATED FOR WATER INFILTRATION. IF AUTHORITY HAVING JURISDICTION REQUIRES THAT PRODUCT MEETS THIS REQUIREMENT, PRODUCT SHALL BE USED WHEN INSTALLED AT LOCATION PROTECTED BY OVERHANG SUCH THAT OVERHANG (OH) RATIO = OH LENGTH ÷ OH HEIGHT IS ≥ 1.0



- NOTES:**
- ALL DOORS SHOWN IN CONFIGURATIONS ON THIS SHEET MAY BE LEFT HAND OR RIGHT HAND OPERATING DOORS.
  - SIDELITE MAY BE USED IN LIEU OF DOOR IN CONFIGURATIONS SHOWN ABOVE AS LONG AS O.A. DIMENSIONS ARE NOT SURPASSED.

| TABLE OF CONTENTS |          |   |
|-------------------|----------|---|
| SHEET             | REVISION | SHEET DESCRIPTION                                       |
| 1                 | A        | TYPICAL ELEVATIONS, DESIGN PRESSURES, AND GENERAL NOTES |
| 2                 | A        | TYPICAL ELEVATIONS                                      |
| 3                 | A        | TYPICAL ANCHOR LAYOUTS AND NOTES                        |
| 4                 | A        | QUALIFIED CONFIGURATIONS & GLAZING DETAIL               |
| 5                 | -        | OPTIONAL 2X BUCK ANCHORING DETAILS                      |
| 6                 | A        | VERTICAL ASSEMBLIES                                     |
| 7                 | A        | HORIZONTAL ASSEMBLIES                                   |
| 8                 | A        | WOOD SUBSTRATES   |
| 9                 | A        | CONCRETE SUBSTRATES                                     |
| 10                | A        | COMPONENTS & BILL OF MATERIALS                          |

| CONFIGURATION | MAX. OVERALL NOMINAL SIZE |        | DESIGN PRESSURE (PSF) |      |          |      |                     |      |          |      | MISSILE IMPACT RATING |
|---------------|---------------------------|--------|-----------------------|------|----------|------|---------------------|------|----------|------|-----------------------|
|               |                           |        | FINGER-JOINTED PINE   |      |          |      | ALL OTHER MATERIALS |      |          |      |                       |
|               | WIDTH                     | HEIGHT | INSWING               |      | OUTSWING |      | INSWING             |      | OUTSWING |      |                       |
|               |                           |        | POS.                  | NEG. | POS.     | NEG. | POS.                | NEG. | POS.     | NEG. |                       |
| O             | 3'-0"                     | 6'-8"  | 65*                   | 65   | 65*      | 65   | 50*                 | 50   | 50*      | 50   | LMI & SMI             |
| O,X,O         | 9'-0"                     | 6'-8"  | 65*                   | 65   | 65*      | 65   | 50*                 | 50   | 50*      | 50   | LMI & SMI             |
| O,X,O RADIUS  | 9'-0"                     | 6'-8"  | 65*                   | 65   | 65*      | 65   | 50*                 | 50   | 50*      | 50   | LMI & SMI             |
| O,X,O         | 9'-0"                     | 8'-0"  | 50*                   | 50   | 50*      | 50   | 50*                 | 50   | 50*      | 50   | LMI & SMI             |
| O             | 3'-0"                     | 8'-0"  | 50*                   | 50   | 50*      | 50   | 50*                 | 50   | 50*      | 50   | LMI & SMI             |
| X,O           | 6'-0"                     | 6'-8"  | 65*                   | 65   | 65*      | 65   | 50*                 | 50   | 50*      | 50   | LMI & SMI             |
| X,O RADIUS    | 6'-0"                     | 6'-8"  | 65*                   | 65   | 65*      | 65   | 50*                 | 50   | 50*      | 50   | LMI & SMI             |
| X,O           | 6'-0"                     | 8'-0"  | 50*                   | 50   | 50*      | 50   | 50*                 | 50   | 50*      | 50   | LMI & SMI             |

\*SEE GENERAL NOTE 7, SHEET 1, FOR WATER INFILTRATION APPROVED SILLS.

PREPARED BY:



**BUILDING DROPS, INC.**  
398 E. DANIA BEACH BLVD., STE. 338  
DANIA BEACH, FL 33004  
PH: (954)399-8478  
FAX: (954)744.4738  
WEB: www.buildingdrops.com

TITLE: DESIGN PRO/SMOOTH PRO FULL LITE  
IMPACT APPROVED  
TYPICAL ELEVATIONS, DESIGN PRESSURES, AND GENERAL NOTES

3737 LAKEPORT BLVD.,  
KLAMATH FALLS, OR 97601  
PH: (541)882-3451  
FAX: (541)850-2609



| REMARKS                         | BY | DATE     |
|---------------------------------|----|----------|
| Add ADA sill, Multi-Point Lock, | GL | 06/23/14 |
| Radius Lite & Boxed Sidelite.   |    |          |
| Reference DWG. #A010876A        | AM | 09/11/19 |

THE INSTALLATION DETAILS DESCRIBED HEREIN ARE GENERIC AND MAY NOT REFLECT ACTUAL CONDITIONS FOR A SPECIFIC SITE. IF SITE CONDITIONS CAUSE INSTALLATION TO DEVIATE FROM THE REQUIREMENTS DETAILED HEREIN, A LICENSED ENGINEER OR ARCHITECT SHALL PREPARE SITE SPECIFIC DOCUMENTS FOR USE WITH THIS DOCUMENT.



DATE: 02.05.14  
DWG. BY: GL/TJM  
CHK. BY: SS/MSS  
SCALE: NTS  
DWG. #: D015707  
SHEET: 1 OF 11

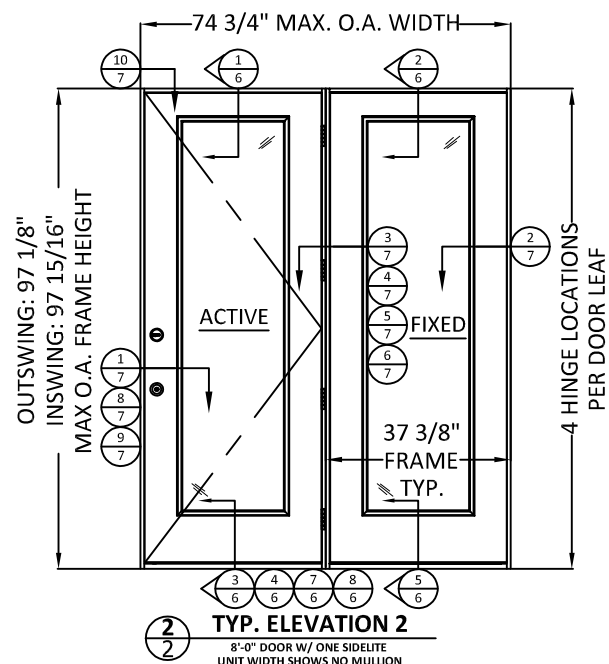
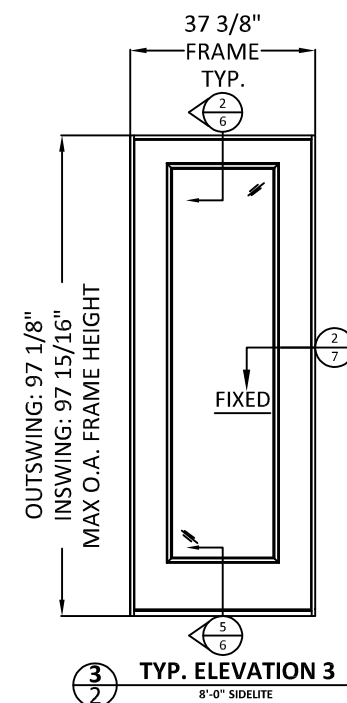
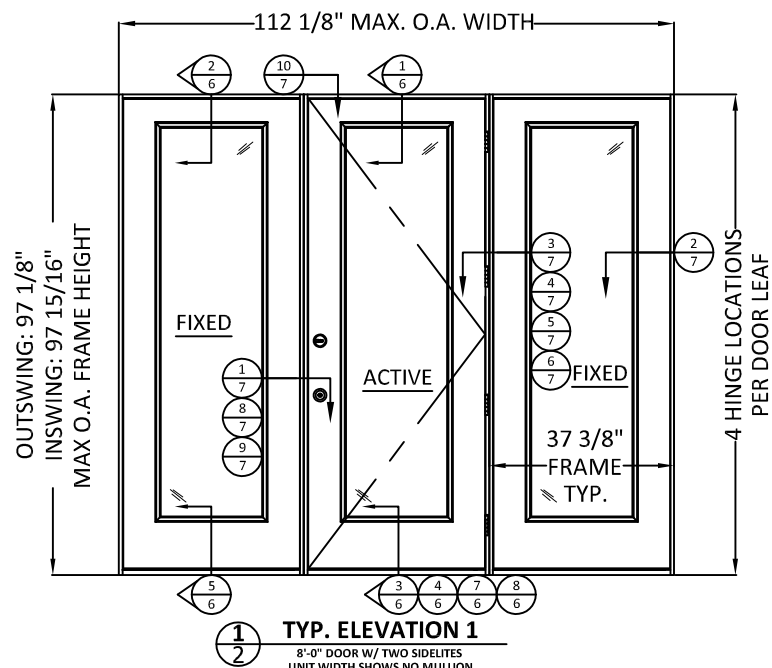
PREPARED BY:



**BUILDING DROPS, INC.**  
 398 E. DANIA BEACH BLVD., STE. 338  
 DANIA BEACH, FL 33004  
 PH: (954)399-8478  
 FAX: (954)744.4738  
 WEB: www.buildingdrops.com

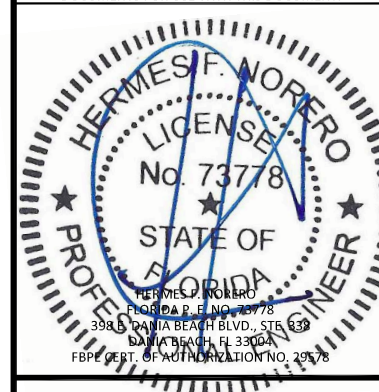
TITLE: DESIGN PRO/SMOOTH PRO FULL LITE  
 IMPACT APPROVED  
 TYPICAL ELEVATIONS

3737 LAKEPORT BLVD.,  
 KLAMATH FALLS, OR 97601  
 PH: (541)882-3451  
 FAX: (541)850-2609



| REMARKS                         | BY | DATE     |
|---------------------------------|----|----------|
| Add ADA sill, Multi-Point Lock, | GL | 06/23/14 |
| Radius Lite & Boxed Sidelite.   |    |          |
| Reference DWG. #A010876A        | AM | 09/11/19 |

THE INSTALLATION DETAILS DESCRIBED HEREIN ARE GENERIC AND MAY NOT REFLECT ACTUAL CONDITIONS FOR A SPECIFIC SITE. IF SITE CONDITIONS CAUSE INSTALLATION TO DEVIATE FROM THE REQUIREMENTS DETAILED HEREIN, A LICENSED ENGINEER OR ARCHITECT SHALL PREPARE SITE SPECIFIC DOCUMENTS FOR USE WITH THIS DOCUMENT.



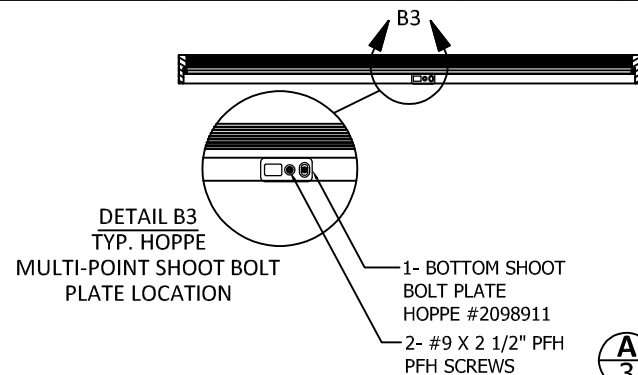
|          |          |
|----------|----------|
| DATE:    | 02.05.14 |
| DWG. BY: | GL/TJM   |
| CHK. BY: | SS/MSS   |
| SCALE:   | NTS      |
| DWG. #:  | D015707  |
| SHEET:   | OF 11    |

**INSTALLATION NOTES:**

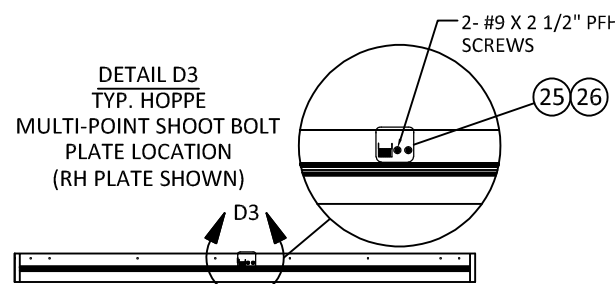
- ONE (1) INSTALLATION ANCHOR IS REQUIRED AT EACH ANCHOR LOCATION SHOWN.
- SHIM AS REQUIRED AT EACH INSTALLATION ANCHOR WITH LOAD BEARING SHIM(S). MAXIMUM ALLOWABLE SHIM STACK TO BE 1/4 INCH. SHIM WHERE SPACE OF 1/16 INCH OR GREATER OCCURS. SHIM(S) SHALL BE CONSTRUCTED OF HIGH DENSITY PLASTIC OR BETTER.
- MINIMUM EMBEDMENT AND EDGE DISTANCE EXCLUDE WALL FINISHES, INCLUDING BUT NOT LIMITED TO STUCCO, FOAM, BRICK VENEER, AND SIDING.
- INSTALLATION ANCHORS AND ASSOCIATED HARDWARE MUST BE MADE OF CORROSION RESISTANT MATERIAL OR HAVE A CORROSION RESISTANT COATING, AND SHALL BE INSTALLED IN ACCORDANCE WITH ANCHOR MANUFACTURER'S INSTALLATION INSTRUCTIONS.
- FOR HOLLOW BLOCK AND GROUT FILLED BLOCK, DO NOT INSTALL INSTALLATION ANCHORS INTO MORTAR JOINTS. EDGE DISTANCE IS MEASURED FROM FREE EDGE OF BLOCK OR EDGE OF MORTAR JOINT INTO FACE SHELL OF BLOCK.
- FOR 2X STUD CONSTRUCTION, ANCHORING OF THESE PRODUCTS SHALL BE THE SAME AS FOR 2X BUCK CONCRETE/MASONRY CONSTRUCTION.
- INSTALLATION ANCHOR CAPACITIES FOR PRODUCTS HEREIN ARE BASED ON SUBSTRATE MATERIALS WITH THE FOLLOWING PROPERTIES:
  - WOOD - MINIMUM SPECIFIC GRAVITY OF 0.55.
  - CONCRETE - MINIMUM COMPRESSIVE STRENGTH OF 3000 PSI.
  - GROUT-FILLED CMU- UNIT STRENGTH CONFORMS TO ASTM C-90 WITH MINIMUM COMPRESSIVE STRENGTH OF 2000 PSI AND GROUT CONFORMS TO ASTM C 476, MINIMUM GROUT COMPRESSIVE STRENGTH OF 2000 PSI.
  - HOLLOW BLOCK CMU - UNIT STRENGTH CONFORMS TO ASTM C-90 WITH MINIMUM COMPRESSIVE STRENGTH OF 2000 PSI.
- SEE SHEETS 8 AND 9 FOR MORE DETAILS OF THE INSTALLATION REQUIREMENTS, INCLUDING ANCHOR LOCATIONS, EDGE DISTANCES, EMBEDMENTS, AND SHIM SPACING.
- OPTIONALLY, ANCHORS CAN BE PLACED IN NARROW SECTION OF HEAD OR JAMB AS LONG AS MINIMUM EMBEDMENT AND EDGE DISTANCE ARE ACHIEVED.

**ANCHOR TABLE**

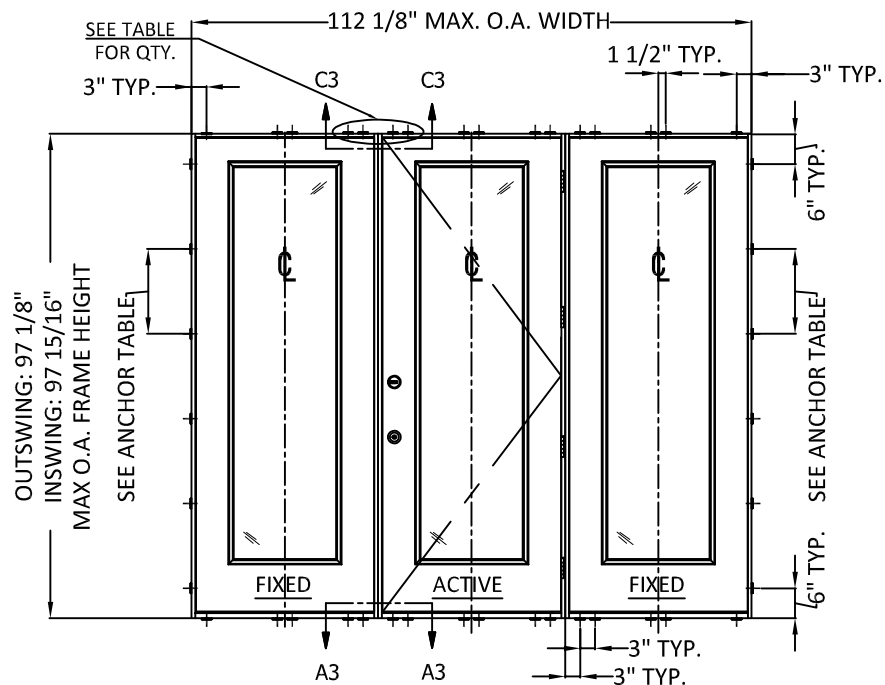
| ANCHOR TYPE   | ANCHOR SIZE | SUBSTRATE               | MIN. EMBEDMENT                 | MIN. EDGE DISTANCE | 6'8" DOORS                 |                                    | 8'0" DOORS                 |                                    |
|---------------|-------------|-------------------------|--------------------------------|--------------------|----------------------------|------------------------------------|----------------------------|------------------------------------|
|               |             |                         |                                |                    | MAX. O.C. SPACING AT JAMBS | # OF ANCHORS AT HEAD/SILL CLUSTERS | MAX. O.C. SPACING AT JAMBS | # OF ANCHORS AT HEAD/SILL CLUSTERS |
| WOOD SCREW    | #10         | 2X WOOD BUCK OR FRAMING | 1-1/2"                         | 3/4"               | 17-1/2"                    | 4                                  | 17-1/4"                    | 4                                  |
| ITW TAPCON    | 3/16"       | CONCRETE/CMU            | 1-1/4"                         | 2-1/2"             | 17-1/2"                    | 4                                  | 17-1/4"                    | 4                                  |
| ELCO ULTRACON | 1/4"        | CONCRETE/CMU            | 1-3/8" - CONC.<br>1-1/4" - CMU | 1"                 | 17-1/2"                    | 4                                  | 17-1/4"                    | 4                                  |
| ITW TAPCON    | 3/16"       | CONCRETE/CMU            | 1-1/4"                         | 1"                 | 11-5/8"                    | 8                                  | 14-3/8"                    | 6                                  |



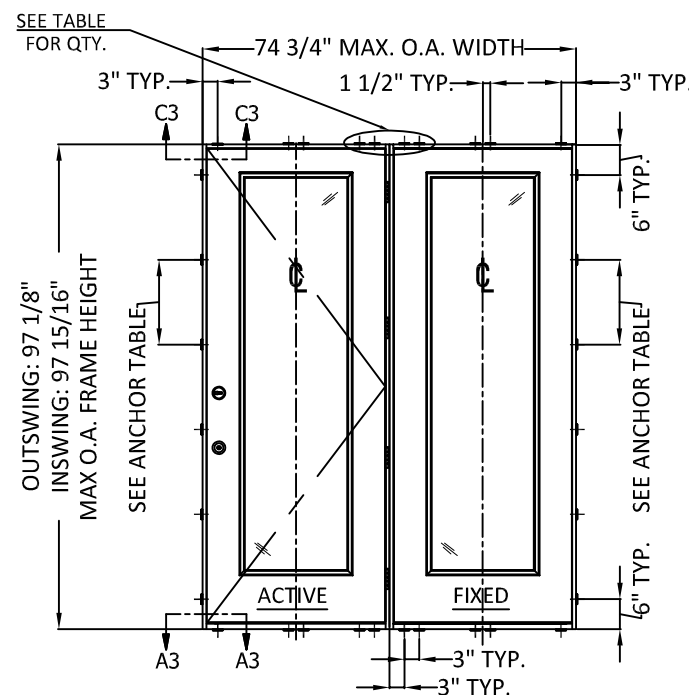
**A**  
**3** **SILL SECTION VIEW**  
INSWING SHOWN OUTSWING SIMILAR  
SEE DETAIL B3



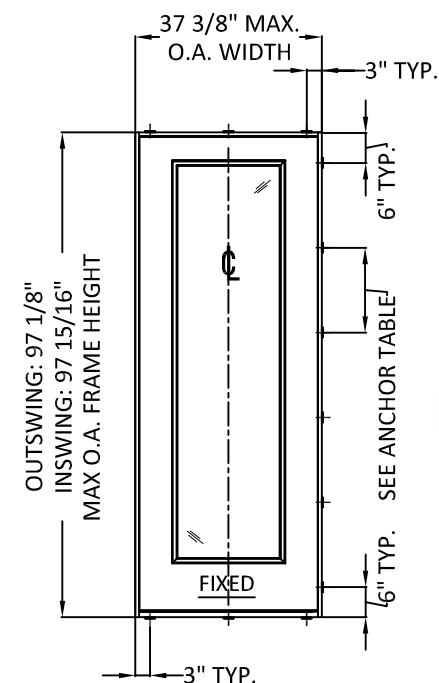
**C**  
**3** **HEAD SECTION VIEW**  
INSWING SHOWN OUTSWING SIMILAR  
SEE DETAIL D3



**1**  
**3** **TYP. ANCHOR LAYOUT**  
TYP. W/ TWO SIDELITES  
6'-8" OR 8'-0" DOOR HEIGHT



**2**  
**3** **TYP. ANCHOR LAYOUT**  
TYP. W/ ONE SIDELITE  
6'-8" OR 8'-0" DOOR HEIGHT



**3**  
**3** **TYP. ANCHOR LAYOUT**  
TYP. FIXED SIDELITE  
6'-8" OR 8'-0" DOOR HEIGHT

- NOTES:**
- ALL DOORS SHOWN IN CONFIGURATIONS ON THIS SHEET MAY BE LEFT HAND OR RIGHT HAND OPERATING DOORS.
  - SIDELITE MAY BE USED IN LIEU OF DOOR IN CONFIGURATIONS SHOWN ABOVE AS LONG AS O.A. DIMENSIONS ARE NOT SURPASSED.

PREPARED BY:



**BUILDING DROPS, INC.**  
398 E. DANIA BEACH BLVD., STE. 338  
DANIA BEACH, FL 33004  
PH: (954)399-8478  
FAX: (954)744.4738  
WEB: www.buildingdrops.com

TITLE: DESIGN PRO/SMOOTH PRO FULL LITE  
IMPACT APPROVED

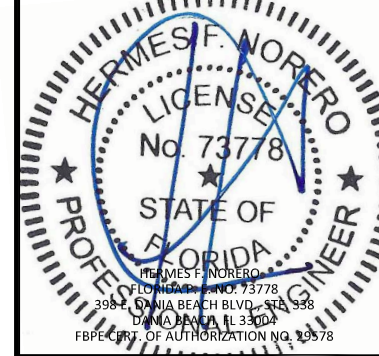
TYPICAL ANCHOR LAYOUTS AND NOTES

3737 LAKEPORT BLVD.,  
KLAMATH FALLS, OR 97601  
PH: (541)882-3451  
FAX: (541)850-2609



| REMARKS                         | BY | DATE     |
|---------------------------------|----|----------|
| Add ADA sill, Multi-Point Lock, | GL | 06/23/14 |
| Radius Lite & Boxed Sidelite.   |    |          |
| Reference DWG. #A010876A        | AM | 09/11/19 |

THE INSTALLATION DETAILS DESCRIBED HEREIN ARE GENERIC AND MAY NOT REFLECT ACTUAL CONDITIONS FOR A SPECIFIC SITE. IF SITE CONDITIONS CAUSE INSTALLATION TO DEVIATE FROM THE REQUIREMENTS DETAILED HEREIN, A LICENSED ENGINEER OR ARCHITECT SHALL PREPARE SITE SPECIFIC DOCUMENTS FOR USE WITH THIS DOCUMENT.



DATE: 02.05.14

DWG. BY: GL/TJM  
CHK. BY: SS/MSS

SCALE: NTS

DWG. #: D015707

SHEET: OF 11

PREPARED BY:



**BUILDING DROPS, INC.**  
 398 E. DANIA BEACH BLVD., STE. 338  
 DANIA BEACH, FL 33004  
 PH: (954)399-8478  
 FAX: (954)744-4738  
 WEB: www.buildingdrops.com

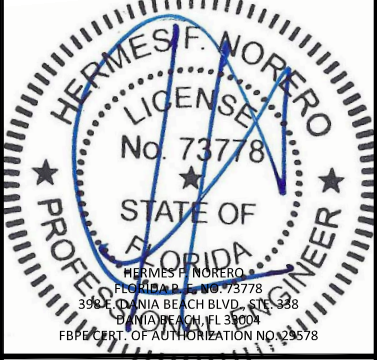
TITLE: DESIGN PRO/SMOOTH PRO FULL LITE  
 IMPACT APPROVED  
 QUALIFIED CONFIGURATIONS  
 & GLAZING DETAIL

3737 LAKEPORT BLVD.,  
 KLAMATH FALLS, OR 97601  
 PH: (541)882-3451  
 FAX: (541)850-2609

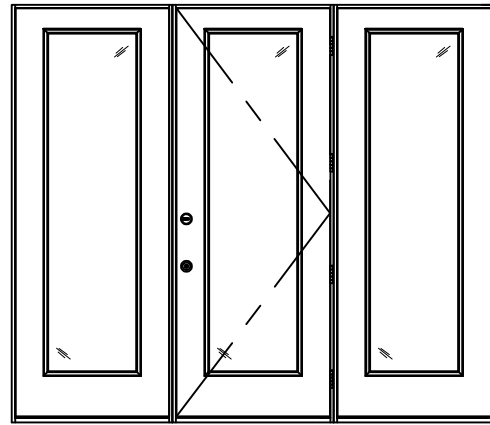
**JELD-WEN**  
 WINDOWS & DOORS

| REMARKS                         | BY | DATE     |
|---------------------------------|----|----------|
| Add ADA sill, Multi-Point Lock, | GL | 06/23/14 |
| Radius Lite & Boxed Sidelite.   |    |          |
| Reference DWG. #A010876A        | AM | 09/11/19 |

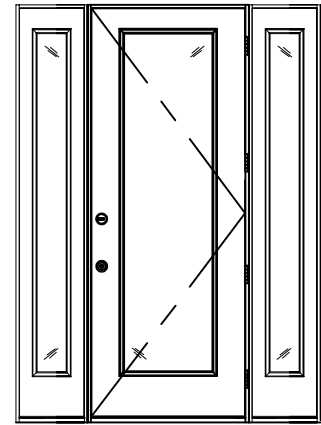
THE INSTALLATION DETAILS DESCRIBED HEREIN ARE GENERIC AND MAY NOT REFLECT ACTUAL CONDITIONS FOR A SPECIFIC SITE. IF SITE CONDITIONS CAUSE INSTALLATION TO DEVIATE FROM THE REQUIREMENTS DETAILED HEREIN, A LICENSED ENGINEER OR ARCHITECT SHALL PREPARE SITE SPECIFIC DOCUMENTS FOR USE WITH THIS DOCUMENT.



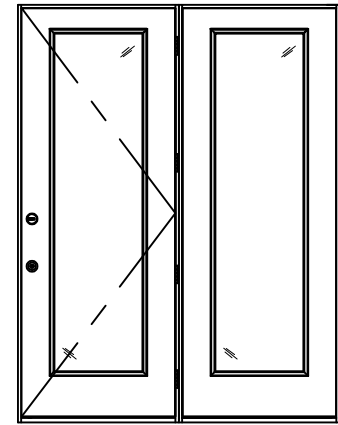
|                 |                 |
|-----------------|-----------------|
| DATE: 02.05.14  |                 |
| DWG. BY: GL/TJM | CHK. BY: SS/MSS |
| SCALE: NTS      |                 |
| DWG. #: D015707 |                 |
| SHEET: OF 11    |                 |



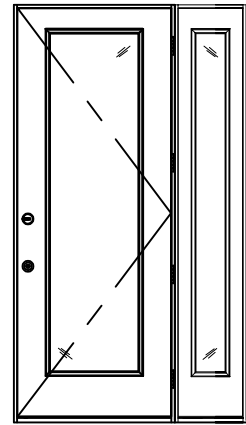
**1**  
**4** O,X,O ELEVATION  
 WITH 3'0" SIDELITES



**2**  
**4** O,X,O ELEVATION  
 WITH 1'3" SIDELITES

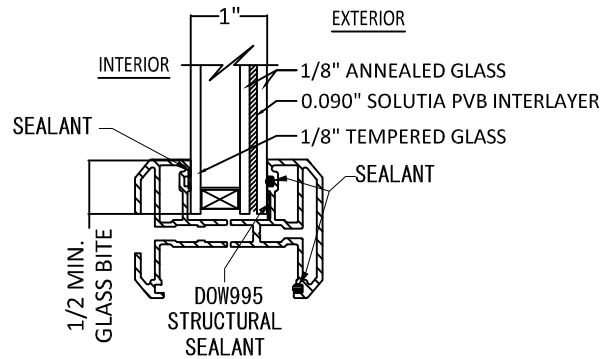


**3**  
**4** X,O ELEVATION  
 WITH 3'0" SIDELITE



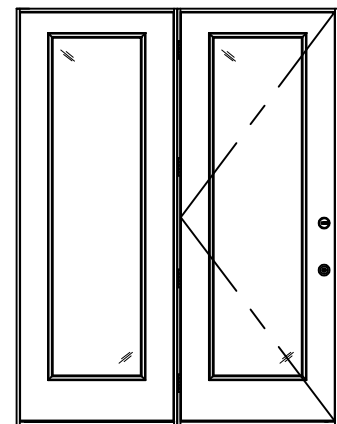
**4**  
**4** X,O ELEVATION  
 WITH 1'3" SIDELITE

NOTE:  
 ALL DOORS SHOWN IN CONFIGURATIONS  
 ON THIS SHEET MAY BE LEFT HAND OR  
 RIGHT HAND OPERATING DOORS.

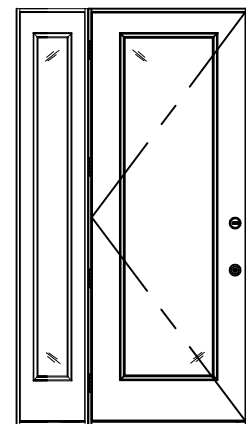


**13**  
**4** GLAZING DETAIL OPTION

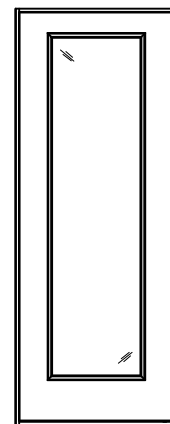
20 1/2" MAX D.L.O. WIDTH  
 78 1/2" MAX D.L.O. HEIGHT  
 3-0 X 6-8 - DP 65  
 6-0 X 6-8 - DP 60  
 3-0 X 8-0 - DP 50  
 6-0 X 8-0 - DP 45



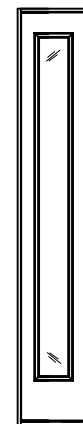
**5**  
**4** O,X ELEVATION  
 WITH 3'0" SIDELITE



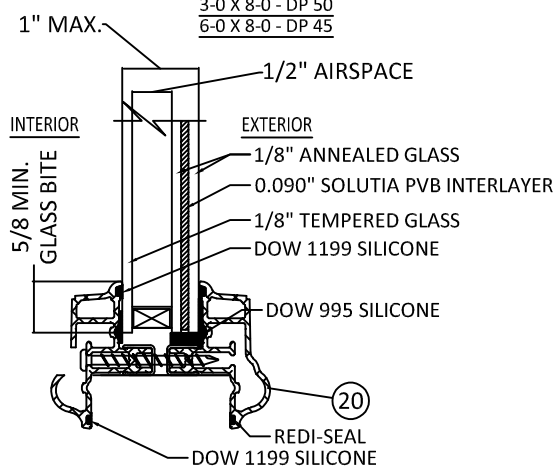
**6**  
**4** O,X ELEVATION  
 WITH 1'3" SIDELITE



**7**  
**4** O ELEVATION  
 3'-0" SIDELITE

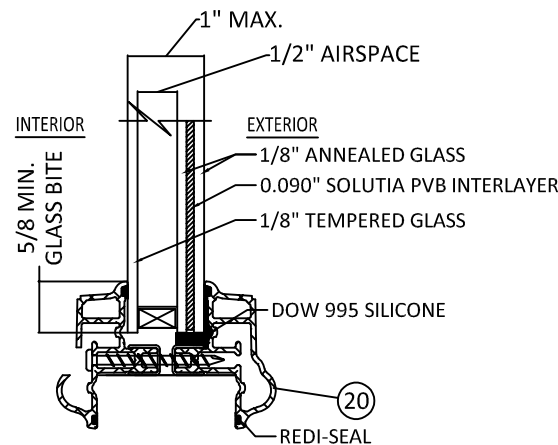


**8**  
**4** O ELEVATION  
 1'3" SIDELITE



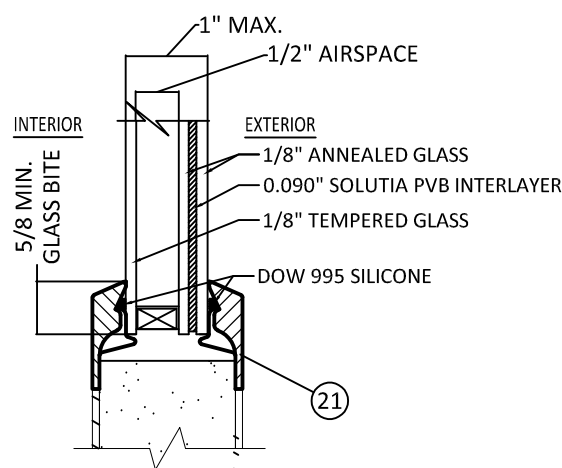
**9**  
**4** 6'-8" GLAZING DETAIL

20 1/2" MAX. D.L.O. WIDTH  
 62 1/2" MAX. D.L.O. HEIGHT



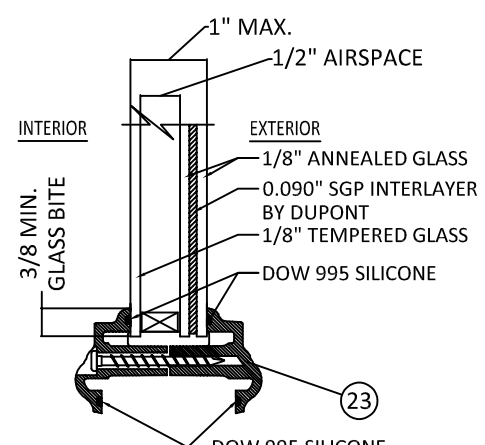
**10**  
**4** 8'-0" GLAZING DETAIL

20 1/2" MAX. D.L.O. WIDTH  
 78 1/2" MAX. D.L.O. HEIGHT



**11**  
**4** FLUSH GLAZE DETAIL

23 7/8" MAX. D.L.O. WIDTH  
 78 7/8" MAX. D.L.O. HEIGHT



**12**  
**4** GLAZING DETAIL

FOR OVAL, SUNBURST, AND ROUND TOPS  
 IN 6'8" UNITS AT DP +/- 65 PSF ONLY

NOTE:  
 FRACTIONAL GLAZING, INCLUDING INTERNAL GRID, BLINDS  
 BETWEEN GLASS, DECORATIVE, AND EXTERNAL WROUGHT  
 IRON AND RADIUS ARE APPROVED ON ALL GLAZING DETAILS  
 SHOWN ABOVE.

PREPARED BY:



**BUILDING DROPS, INC.**  
 398 E. DANIA BEACH BLVD., STE. 338  
 DANIA BEACH, FL 33004  
 PH: (954)399-8478  
 FAX: (954)744.4738  
 WEB: www.buildingdrops.com

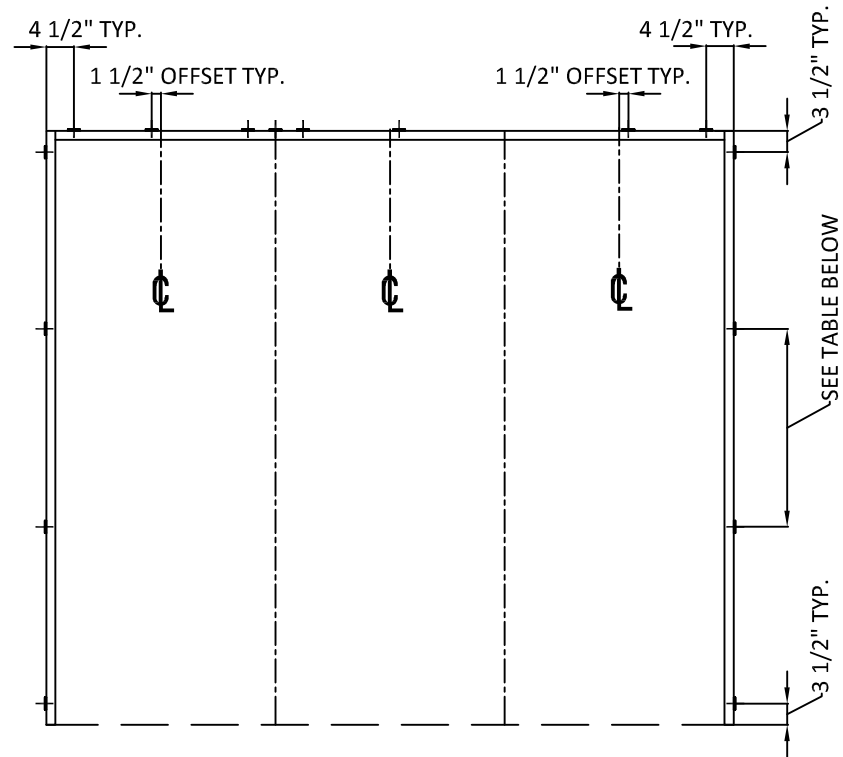
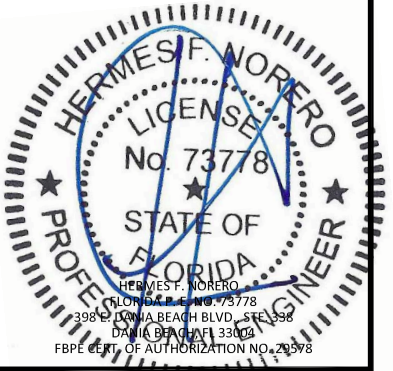
TITLE: DESIGN PRO/SMOOTH PRO FULL LITE  
 IMPACT APPROVED  
 OPTIONAL 2X BUCK  
 ANCHORING DETAILS

3737 LAKEPORT BLVD.,  
 KLAMATH FALLS, OR 97601  
 PH: (541)882-3451  
 FAX: (541)850-2609

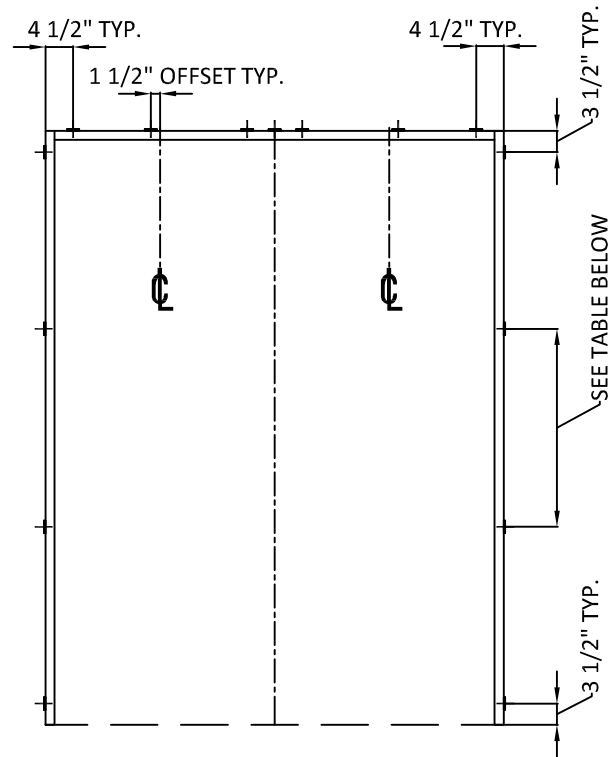


| REMARKS   | BY | DATE     |
|---|----|----------|
| Add ADA sill, Multi-Point Lock, Radius Lite & Boxed Sidelite. | GL | 06/23/14 |
| Reference DWG. #A010876A                                      | AM | 09/11/19 |

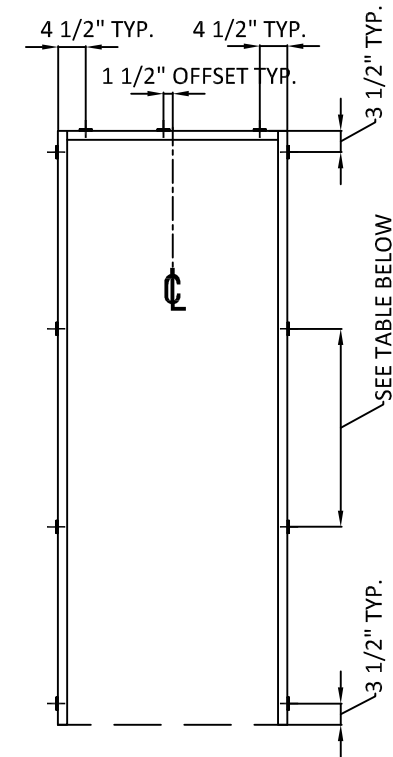
THE INSTALLATION DETAILS DESCRIBED HEREIN ARE GENERIC AND MAY NOT REFLECT ACTUAL CONDITIONS FOR A SPECIFIC SITE. IF SITE CONDITIONS CAUSE INSTALLATION TO DEVIATE FROM THE REQUIREMENTS DETAILED HEREIN, A LICENSED ENGINEER OR ARCHITECT SHALL PREPARE SITE SPECIFIC DOCUMENTS FOR USE WITH THIS DOCUMENT.



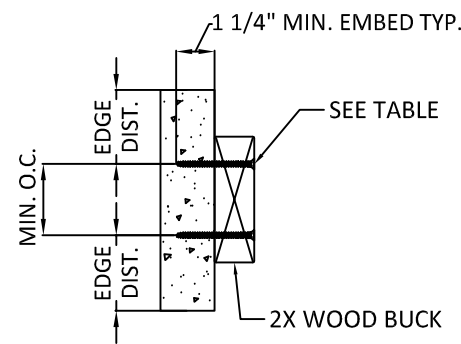
1 TYP. ANCHOR LAYOUT  
 5 OPTIONAL 2X BUCK IN CONCRETE/MASONRY



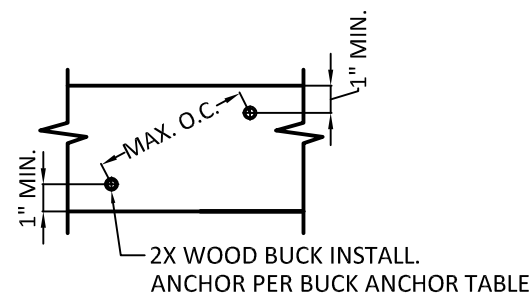
2 TYP. ANCHOR LAYOUT  
 5 OPTIONAL 2X BUCK IN CONCRETE/MASONRY



3 TYP. ANCHOR LAYOUT  
 5 OPTIONAL 2X BUCK IN CONCRETE/MASONRY



4 2X WOOD BUCK INSTALL.  
 CROSS SECTION



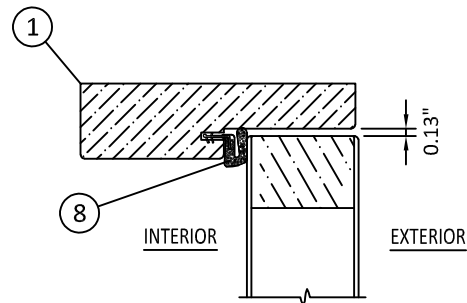
5 2X WOOD BUCK INSTALL.  
 SIDE VIEW

| 2X BUCK ANCHOR TABLE |             |              |                                |                              |                                |                            |                            |
|----------------------|-------------|--------------|--------------------------------|------------------------------|--------------------------------|----------------------------|----------------------------|
| ANCHOR TYPE          | ANCHOR SIZE | SUBSTRATE    | MIN. EMBEDMENT                 | MIN. EDGE DIST. TO SUBSTRATE | MIN. CENTER TO CENTER DISTANCE | 6'8" DOORS                 | 8'0" DOORS                 |
|                      |             |              |                                |                              |                                | MAX. O.C. SPACING AT JAMBS | MAX. O.C. SPACING AT JAMBS |
| ITW TAPCON           | 1/4"        | CONCRETE/CMU | 1-1/4"                         | 2-1/2"                       | 4"                             | 25"                        | 30-1/4"                    |
| ELCO ULTRACON        | 1/4"        | CONCRETE/CMU | 1-3/8" - CONC.<br>1-1/4" - CMU | 1"                           | 4"                             | 25"                        | 30-1/4"                    |

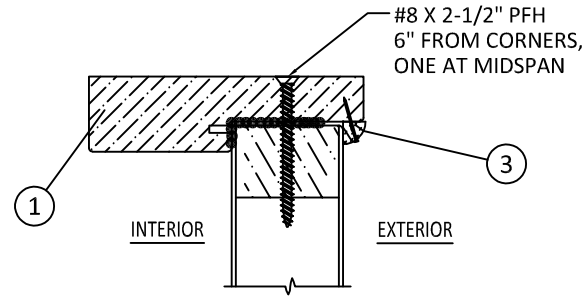
NOTES:

- 2X BUCK IS NOT FOR INSTALLATION AT SILL. THRESHOLD SHALL BE FASTENED IN ACCORDANCE WITH ANCHOR LOCATIONS SHOWN ON SHEET 3.
- ANCHORS MAY BE STAGGERED AS SHOWN IN DETAIL 5/5.

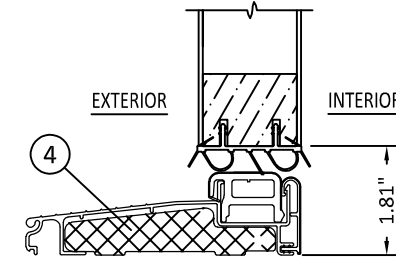
|          |          |
|----------|----------|
| DATE:    | 02.05.14 |
| DWG. BY: | GL/TJM   |
| CHK. BY: | SS/MSS   |
| SCALE:   | NTS      |
| DWG. #:  | D015707  |
| SHEET:   | OF 11    |



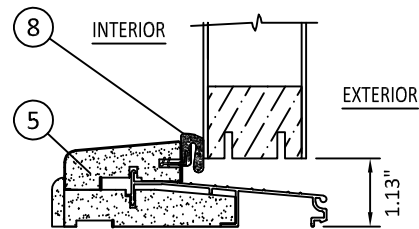
**1**  
**6** **OPERABLE HEAD**  
OUTSWING SHOWN - INSWING SIMILAR



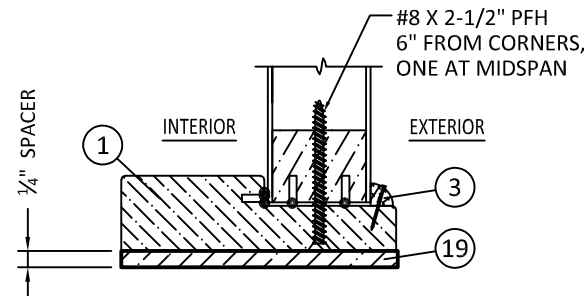
**2**  
**6** **SIDELITE HEAD**  
OUTSWING SHOWN - INSWING SIMILAR



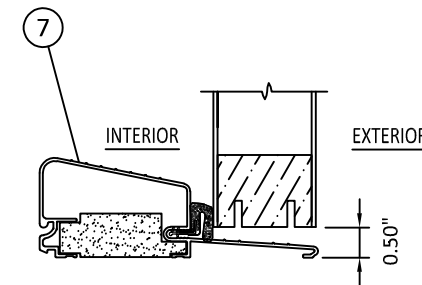
**3**  
**6** **OPERABLE SILL**  
INSWING



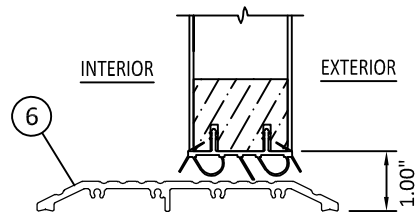
**4**  
**6** **OPERABLE SILL**  
OUTSWING



**5**  
**6** **SIDELITE SILL**  
OUTSWING SHOWN - INSWING SIMILAR



**7**  
**6** **OPERABLE SILL**  
OUTSWING  
OPTIONAL AFCO H-497



**8**  
**6** **OPERABLE ADA SILL**  
INSWING/OUTSWING

PREPARED BY:



**BUILDING DROPS, INC.**  
398 E. DANIA BEACH BLVD., STE. 338  
DANIA BEACH, FL 33004  
PH: (954)399-8478  
FAX: (954)744.4738  
WEB: www.buildingdrops.com

TITLE: DESIGN PRO/SMOOTH PRO FULL LITE  
IMPACT APPROVED

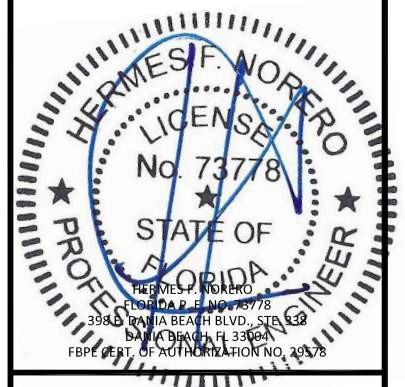
VERTICAL ASSEMBLIES

3737 LAKEPORT BLVD.,  
KLAMATH FALLS, OR 97601  
PH: (541)882-3451  
FAX: (541)850-2609

**JELDOWEN**  
WINDOWS & DOORS

| REMARKS                         | BY | DATE     |
|---------------------------------|----|----------|
| Add ADA sill, Multi-Point Lock, | GL | 06/23/14 |
| Radius Lite & Boxed Sidelite.   |    |          |
| Reference DWG. #A010876A        | AM | 09/11/19 |

THE INSTALLATION DETAILS DESCRIBED HEREIN ARE GENERIC AND MAY NOT REFLECT ACTUAL CONDITIONS FOR A SPECIFIC SITE. IF SITE CONDITIONS CAUSE INSTALLATION TO DEVIATE FROM THE REQUIREMENTS DETAILED HEREIN, A LICENSED ENGINEER OR ARCHITECT SHALL PREPARE SITE SPECIFIC DOCUMENTS FOR USE WITH THIS DOCUMENT.



|          |          |
|----------|----------|
| DATE:    | 02.05.14 |
| DWG. BY: | GL/TJM   |
| CHK. BY: | SS/MSS   |
| SCALE:   | NTS      |
| DWG. #:  | D015707  |
| SHEET:   | OF 11    |

PREPARED BY:



**BUILDING DROPS, INC.**  
 398 E. DANIA BEACH BLVD., STE. 338  
 DANIA BEACH, FL 33004  
 PH: (954)399-8478  
 FAX: (954)744-4738  
 WEB: www.buildingdrops.com

TITLE: DESIGN PRO/SMOOTH PRO FULL LITE  
 IMPACT APPROVED

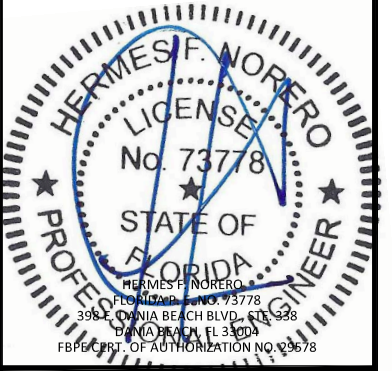
HORIZONTAL ASSEMBLIES

3737 LAKEPORT BLVD.,  
 KLAMATH FALLS, OR 97601  
 PH: (541)882-3451  
 FAX: (541)850-2609



| REMARKS                         | BY | DATE     |
|---------------------------------|----|----------|
| Add ADA sill, Multi-Point Lock, | GL | 06/23/14 |
| Radius Lite & Boxed Sidelite.   |    |          |
| Reference DWG. #A010876A        | AM | 09/11/19 |

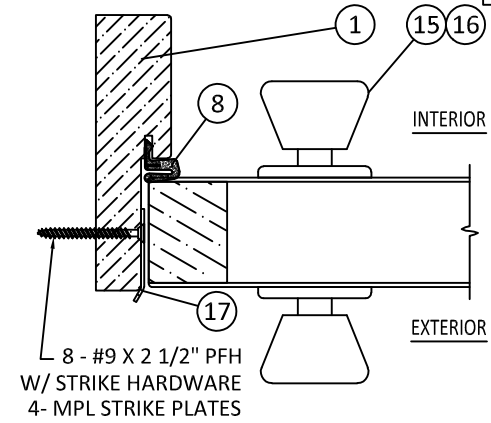
THE INSTALLATION DETAILS DESCRIBED HEREIN ARE GENERIC AND MAY NOT REFLECT ACTUAL CONDITIONS FOR A SPECIFIC SITE. IF SITE CONDITIONS CAUSE INSTALLATION TO DEVIATE FROM THE REQUIREMENTS DETAILED HEREIN, A LICENSED ENGINEER OR ARCHITECT SHALL PREPARE SITE SPECIFIC DOCUMENTS FOR USE WITH THIS DOCUMENT.



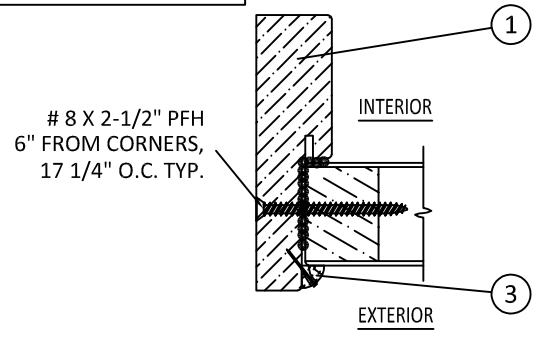
|          |          |
|----------|----------|
| DATE:    | 02.05.14 |
| DWG. BY: | GL/TJM   |
| CHK. BY: | SS/MSS   |
| SCALE:   | NTS      |
| DWG. #:  | D015707  |
| SHEET:   | OF 11    |

NOTE:  
 HINGE AND LOCK ARE INTERCHANGEABLE  
 AT THE MULLION.

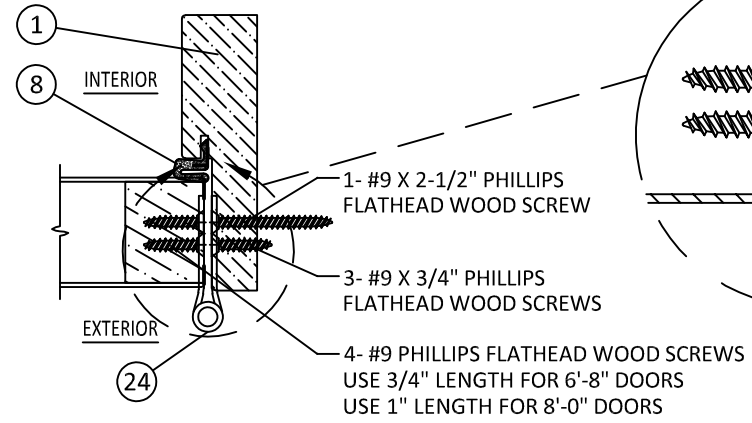
HINGE DETAIL AT JAMB:  
 PLACE #9 X 2-1/2" PFH SCREW  
 NEXT TO WEATHERSTRIP



**1**  
**7** LOCK JAMB  
 OUTSWING SHOWN - INSWING SIMILAR

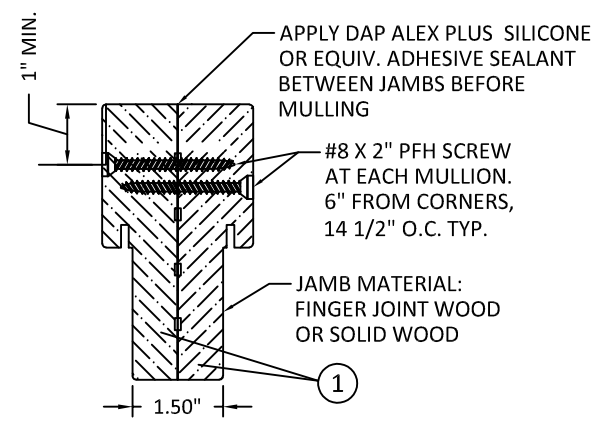


**2**  
**7** FIXED JAMB  
 OUTSWING SHOWN - INSWING SIMILAR

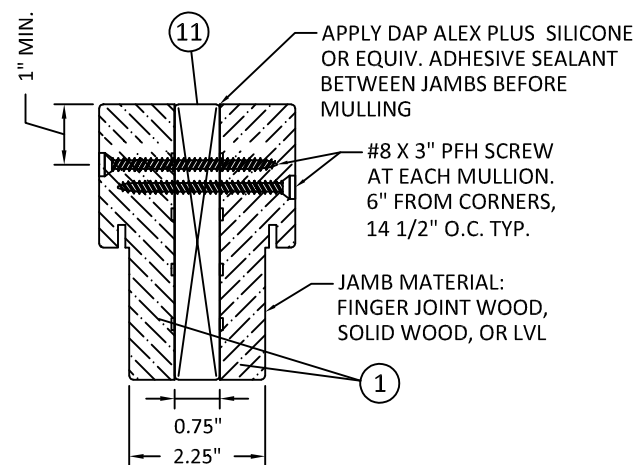


**3**  
**7** HINGE JAMB  
 OUTSWING SHOWN - INSWING SIMILAR

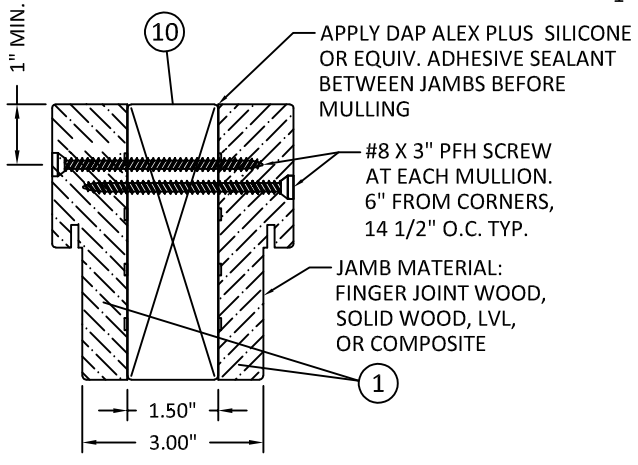
| HINGE SCHEDULE |          |
|----------------|----------|
| DOOR HEIGHT    | QUANTITY |
| 6'-8"          | 3        |
| 8'-0"          | 4        |



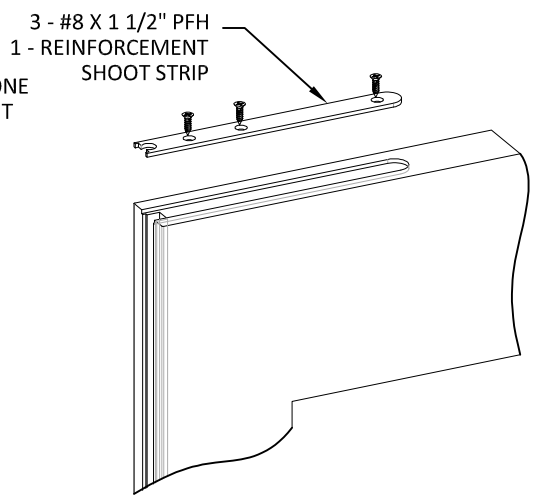
**4**  
**7** BACK-TO-BACK JAMB  
 NO MULLION REINFORCEMENT



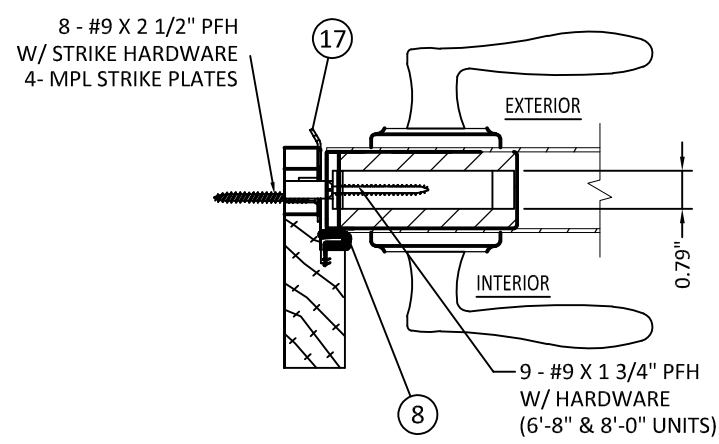
**5**  
**7** BACK-TO-BACK JAMB  
 1X MULLION REINFORCEMENT



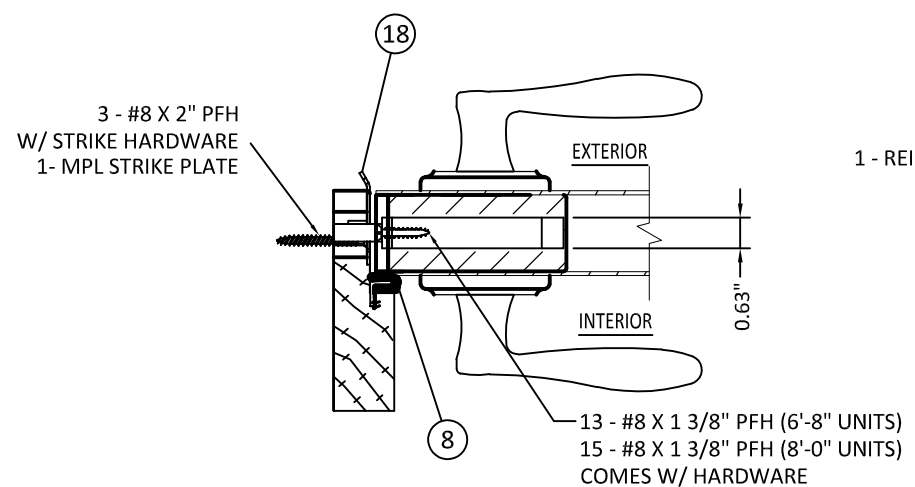
**6**  
**7** BACK-TO-BACK JAMB  
 2X MULLION REINFORCEMENT



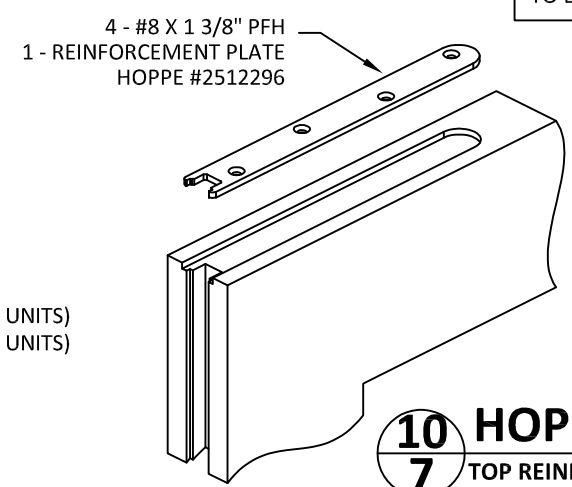
**7**  
**5** GU MULTI-POINT LOCK  
 TOP/BOTTOM REINF. PLATE - ACTIVE PANEL ONLY



**8**  
**7** ROCKWELL MULTI-POINT LOCK  
 OUTSWING SHOWN - INSWING SIMILAR



**9**  
**7** HOPPE MULTI-POINT LOCK  
 OUTSWING SHOWN - INSWING SIMILAR



**10**  
**7** HOPPE MULTI-POINT LOCK  
 TOP REINFORCEMENT PLATE - ACTIVE PANEL ONLY

NOTE:  
 ALL SOLID WOOD USED IN MULLION ASSEMBLIES ABOVE  
 TO BE PONDEROSA PINE (MIN. S.G. = 0.45) OR GREATER.

PREPARED BY:



**BUILDING DROPS, INC.**  
 398 E. DANIA BEACH BLVD., STE. 338  
 DANIA BEACH, FL 33004  
 PH: (954)399-8478  
 FAX: (954)744.4738  
 WEB: www.buildingdrops.com

TITLE: DESIGN PRO/SMOOTH PRO FULL LITE  
 IMPACT APPROVED

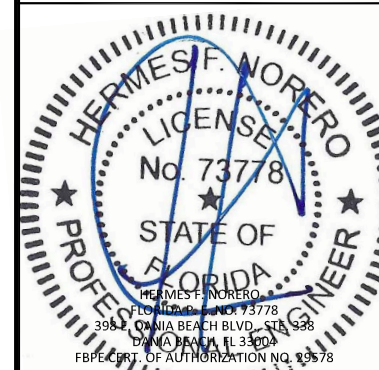
WOOD SUBSTRATES

3737 LAKEPORT BLVD.,  
 KLAMATH FALLS, OR 97601  
 PH: (541)882-3451  
 FAX: (541)850-2609

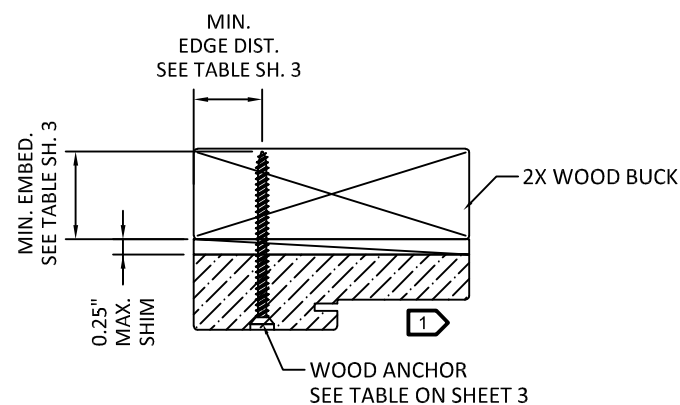
**JELDOWEN**  
 WINDOWS & DOORS

| REMARKS                         | BY | DATE     |
|---------------------------------|----|----------|
| Add ADA sill, Multi-Point Lock, | GL | 06/23/14 |
| Radius Lite & Boxed Sidelite.   |    |          |
| Reference DWG. #A010876A        | AM | 09/11/19 |

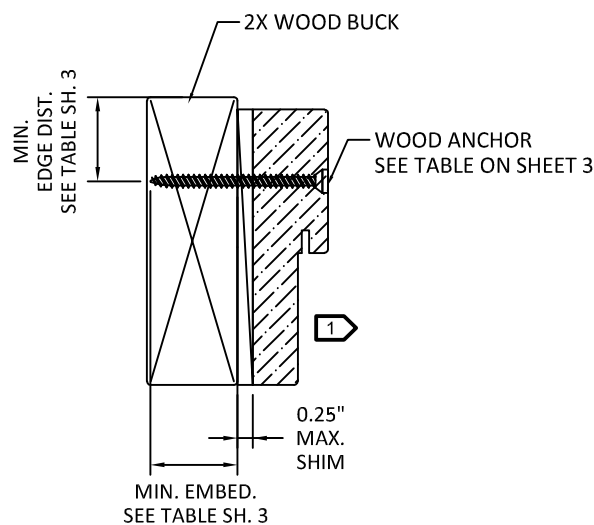
THE INSTALLATION DETAILS DESCRIBED HEREIN ARE GENERIC AND MAY NOT REFLECT ACTUAL CONDITIONS FOR A SPECIFIC SITE. IF SITE CONDITIONS CAUSE INSTALLATION TO DEVIATE FROM THE REQUIREMENTS DETAILED HEREIN, A LICENSED ENGINEER OR ARCHITECT SHALL PREPARE SITE SPECIFIC DOCUMENTS FOR USE WITH THIS DOCUMENT.



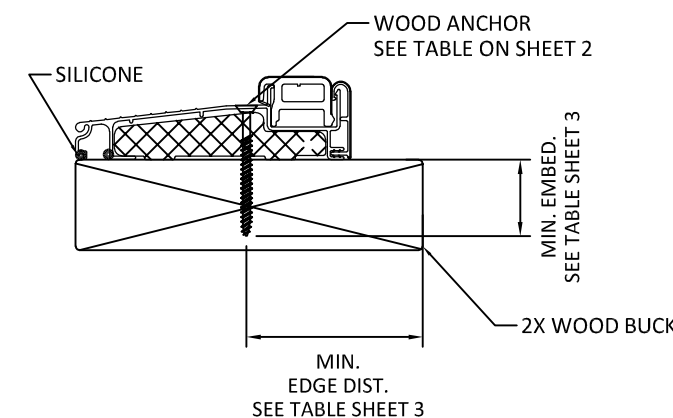
|          |          |
|----------|----------|
| DATE:    | 02.05.14 |
| DWG. BY: | GL/TJM   |
| CHK. BY: | SS/MSS   |
| SCALE:   | NTS      |
| DWG. #:  | D015707  |
| SHEET:   | OF 11    |



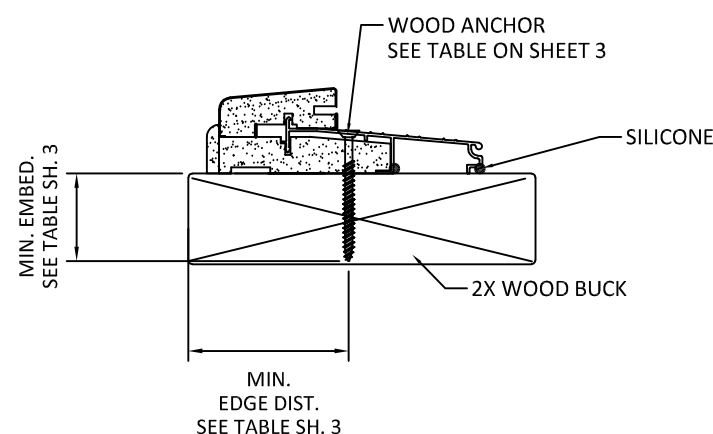
**1**  
**8** HEAD (TYPICAL)  
 OUTSWING SHOWN - INSWING SIMILAR



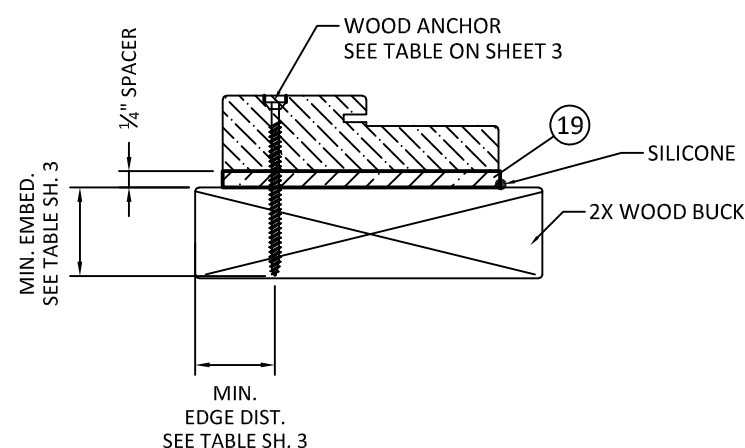
**2**  
**8** JAMB (TYPICAL)  
 OUTSWING SHOWN - INSWING SIMILAR



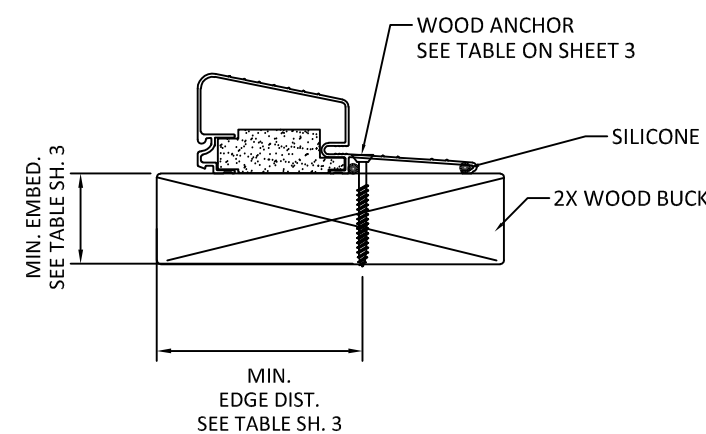
**3**  
**8** OPERABLE SILL  
 INSWING



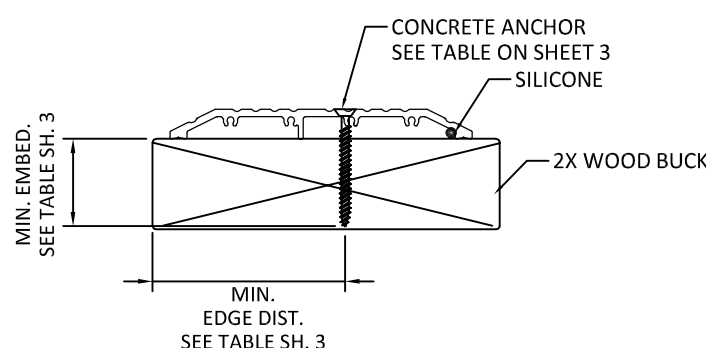
**4**  
**8** OPERABLE SILL  
 OUTSWING



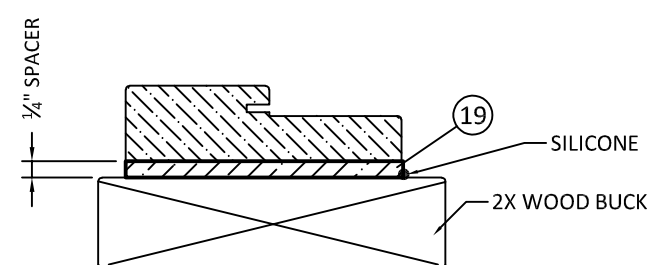
**5**  
**8** SIDELITE SILL (MULLED UNIT)  
 OUTSWING SHOWN - INSWING SIMILAR



**7**  
**8** OPERABLE SILL  
 HIGH BUMP OUTSWING  
 AFCO H-497



**8**  
**8** OPERABLE ADA SILL  
 INSWING/OUTSWING



**9**  
**8** SIDELITE SILL (STAND-ALONE)  
 OUTSWING SHOWN - INSWING SIMILAR  
 NO ANCOR REQUIRED

1 OPTIONALLY, ANCHOR CAN BE PLACED IN NARROW SECTION OF HEAD OR JAMB AS LONG AS MINIMUM EMBEDMENT AND EDGE DISTANCE ARE ACHIEVED.



PREPARED BY:



**BUILDING DROPS, INC.**

398 E. DANIA BEACH BLVD., STE. 338  
DANIA BEACH, FL 33004  
PH: (954)399-8478  
FAX: (954)744.4738  
WEB: www.buildingdrops.com

DESIGN PRO/SMOOTH PRO FULL LITE  
IMPACT APPROVED

CONCRETE SUBSTRATES

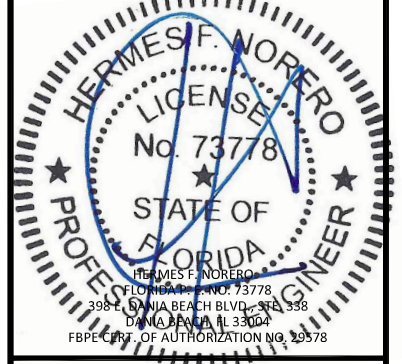
3737 LAKEPORT BLVD.,  
KLAMATH FALLS, OR 97601  
PH: (541)882-3451  
FAX: (541)850-2609

**JELDOWEN**  
WINDOWS & DOORS

TITLE:

| REMARKS                         | BY | DATE     |
|---------------------------------|----|----------|
| Add ADA sill, Multi-Point Lock, | GL | 06/23/14 |
| Radius Lite & Boxed Sidelite.   |    |          |
| Reference DWG. #A010876A        | AM | 09/11/19 |

THE INSTALLATION DETAILS DESCRIBED HEREIN ARE GENERIC AND MAY NOT REFLECT ACTUAL CONDITIONS FOR A SPECIFIC SITE. IF SITE CONDITIONS CAUSE INSTALLATION TO DEVIATE FROM THE REQUIREMENTS DETAILED HEREIN, A LICENSED ENGINEER OR ARCHITECT SHALL PREPARE SITE SPECIFIC DOCUMENTS FOR USE WITH THIS DOCUMENT.



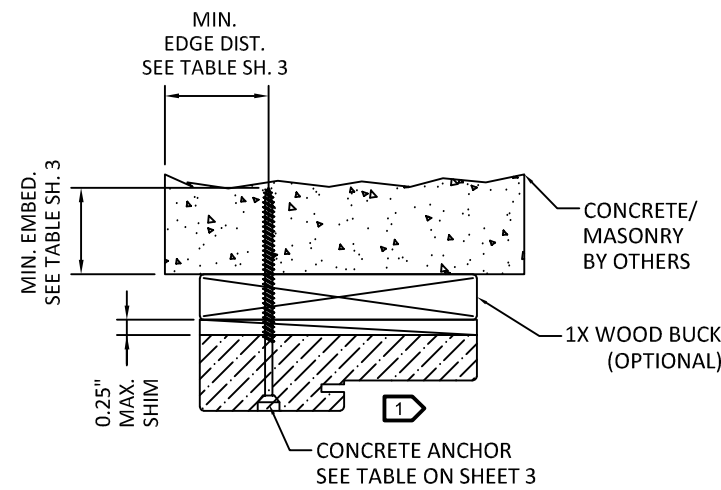
DATE: 02.05.14

DWG. BY: GL/TJM      CHK. BY: SS/MSS

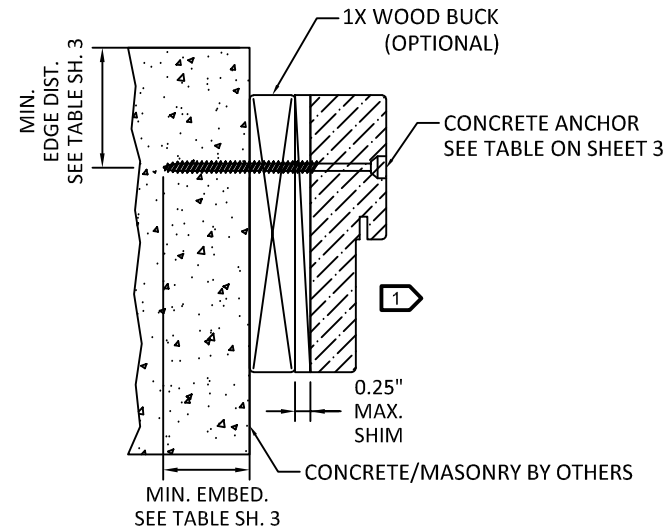
SCALE: NTS

DWG. #: D015707

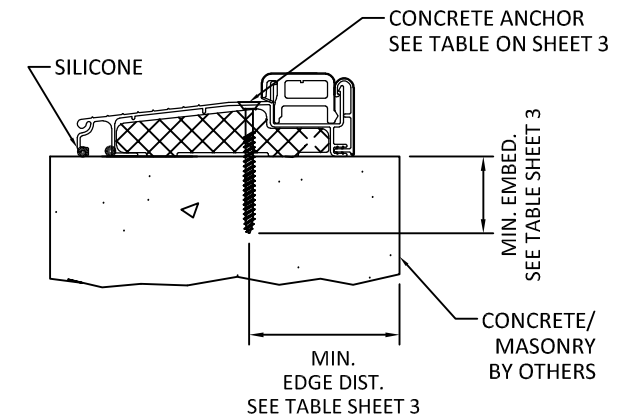
SHEET: OF 11



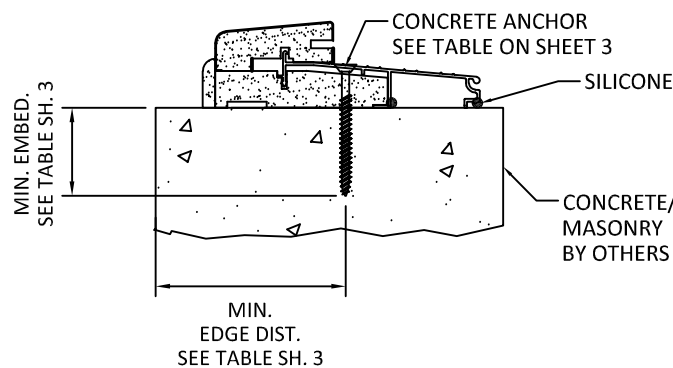
**1**  
**9** **HEAD (TYPICAL)**  
OUTSWING SHOWN - INSWING SIMILAR



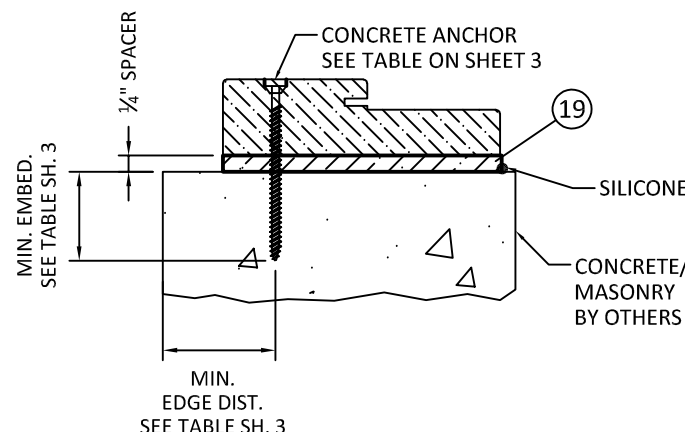
**2**  
**9** **JAMB (TYPICAL)**  
OUTSWING SHOWN - INSWING SIMILAR



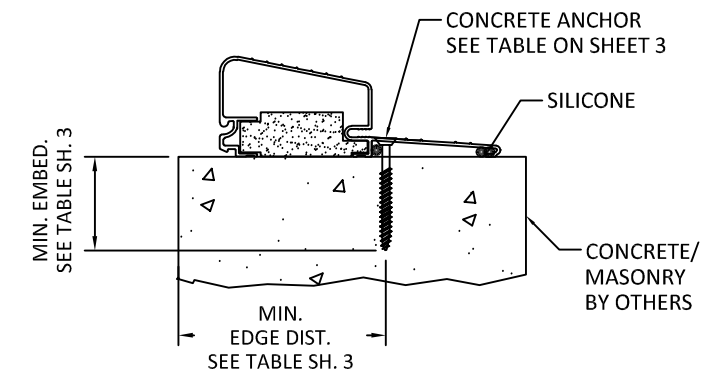
**3**  
**9** **OPERABLE SILL**  
INSWING



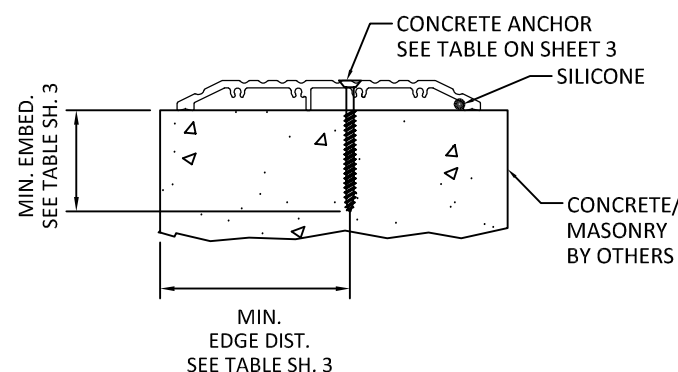
**4**  
**9** **OPERABLE SILL**  
OUTSWING



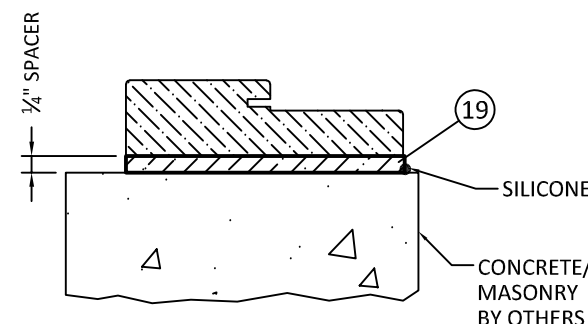
**5**  
**9** **SIDELITE SILL (MULLED UNIT)**  
OUTSWING SHOWN - INSWING SIMILAR



**7**  
**9** **OPERABLE SILL**  
HIGH BUMP OUTSWING  
AFCO H-497



**8**  
**9** **OPERABLE SILL**  
OUTSWING/INSWING

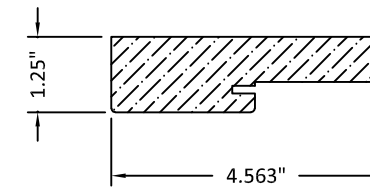


**9**  
**9** **SIDELITE SILL (STAND-ALONE)**  
OUTSWING SHOWN - INSWING SIMILAR  
NO ANCOR REQUIRED

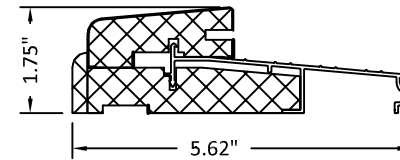
1 OPTIONALLY, ANCHOR CAN BE PLACED IN NARROW SECTION OF HEAD OR JAMB AS LONG AS MINIMUM EMBEDMENT AND EDGE DISTANCE ARE ACHIEVED.

| BILL OF MATERIALS |   |                              |
|-------------------|---|------------------------------|
| ITEM#             | DESCRIPTION   | MATERIAL                     |
| 1                 | FRAME HEAD/JAMBS  | FINGER-JOINTED PINE          |
|                   |   | SOLID PINE                   |
|                   |   | LAMINATED VENEER LUMBER      |
|                   |   | COMPOSITE                    |
| 2                 | (NOT USED)  | -                            |
| 3                 | SIDELITE STOP   | WOOD OR PVC                  |
| 4                 | THRESHOLD   | -                            |
| 5                 | THRESHOLD   | -                            |
| 6                 | THRESHOLD   | -                            |
| 7                 | AFCO H-497 THRESHOLD  | -                            |
| 8                 | WEATHERSTRIP  | URETHANE FOAM & POLYETHYLENE |
| 9                 | NON-COMPRESSION SHIM (0.25" MAX. THK.)  | COMPOSITE                    |
| 10                | 2X WOOD (S.G. MUST BE 0.55 OR GREATER)  | WOOD                         |
| 11                | 1X WOOD (S.G. MUST BE 0.55 OR GREATER)  | WOOD                         |
| 12                | #10 WOOD INSTALLATION SCREW W/ 1 1/2" MIN. EMBEDMENT  | STEEL                        |
| 13                | CONC./CMU ANCHOR (SEE ANCHOR TABLE SHEETS 3 & 5)  | STEEL                        |
| 14                | (NOT USED)  | -                            |
| 15                | LOCK SERIES 400   | STEEL                        |
| 16                | DEADBOLT SERIES 780   | STEEL                        |
| 17                | ROCKWELL MULTI-POINT TONGUE LATCH # 73228768 6-8 UNIT<br>ROCKWELL MULTI-POINT TONGUE LATCH #73228780 8-0 UNIT | STEEL                        |
| 18                | HOPPE MULTI-POINT HARDWARE HLS9000 SINGLE SWING (X)   | STEEL                        |
| 19                | PRESSURE TREATED SILL SPACER USED FOR FIXED PANEL   | WOOD                         |
| 20                | ODL LITE KIT (LMI)  | 6063-T6 ALUMINUM             |
| 21                | FLUSH GLAZING LEG   | FIBERGLASS                   |
| 22                | (NOT USED)  | -                            |
| 23                | ODL LIPLITE KIT (RADIUS LITES)  | PC ABS                       |
| 24                | BUTT HINGE (SEE SCHEDULE SHEET 7)   | STEEL                        |
| 25                | HOPPE MULTI-POINT HEAD SHOOT BOLT PLATE LH #8784091   | STEEL                        |
| 26                | HOPPE MULTI-POINT HEAD SHOOT BOLT PLATE RH #8783923   | STEEL                        |
| 27                | GU SECURY S-BOLT MULTI POINT  | STEEL                        |

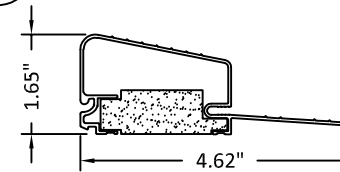
1 FRAME HEAD/JAMBS  
VARIES, SEE BOM ABOVE



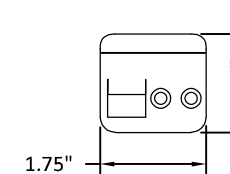
5 THRESHOLD



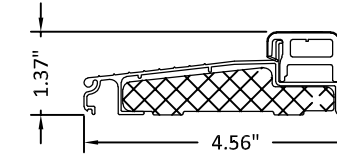
7 AFCO H-497 THRESHOLD



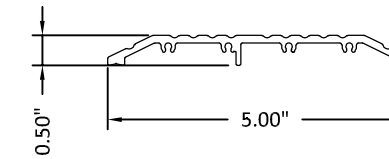
26 HEAD SHOOT BOLT PLATE (RH)



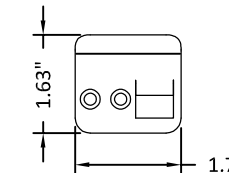
4 THRESHOLD



6 THRESHOLD



25 HEAD SHOOT BOLT PLATE (LH)



PREPARED BY:



**BUILDING DROPS, INC.**

398 E. DANIA BEACH BLVD., STE. 338  
DANIA BEACH, FL 33004  
PH: (954)399-8478  
FAX: (954)744.4738  
WEB: www.buildingdrops.com

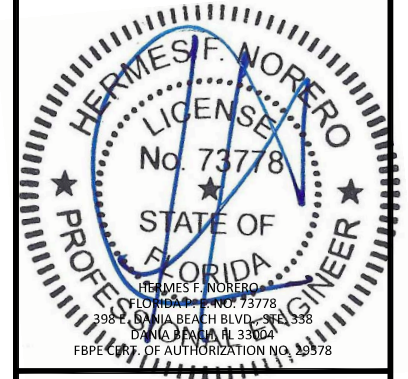
TITLE: DESIGN PRO/SMOOTH PRO FULL LITE  
IMPACT APPROVED  
COMPONENTS AND BILL OF MATERIALS

3737 LAKEPORT BLVD.,  
KLAMATH FALLS, OR 97601  
PH: (541)882-3451  
FAX: (541)850-2609

**JELD-WEN**  
WINDOWS & DOORS

| REMARKS                         | BY | DATE     |
|---------------------------------|----|----------|
| Add ADA sill, Multi-Point Lock, | GL | 06/23/14 |
| Radius Lite & Boxed Sidelite.   |    |          |
| Reference DWG. #A010876A        | AM | 09/11/19 |

THE INSTALLATION DETAILS DESCRIBED HEREIN ARE GENERIC AND MAY NOT REFLECT ACTUAL CONDITIONS FOR A SPECIFIC SITE. IF SITE CONDITIONS CAUSE INSTALLATION TO DEVIATE FROM THE REQUIREMENTS DETAILED HEREIN, A LICENSED ENGINEER OR ARCHITECT SHALL PREPARE SITE SPECIFIC DOCUMENTS FOR USE WITH THIS DOCUMENT.



DATE: 02.05.14

DWG. BY: GL/TJM | CHK. BY: SS/MSS

SCALE: NTS

DWG. #: D015707

SHEET: OF 11

10

PREPARED BY:



**BUILDING DROPS, INC.**  
 398 E. DANIA BEACH BLVD., STE. 338  
 DANIA BEACH, FL 33004  
 PH: (954)399-8478  
 FAX: (954)744.4738  
 WEB: www.buildingdrops.com

TITLE: DESIGN PRO/SMOOTH PRO FULL LITE  
 IMPACT APPROVED

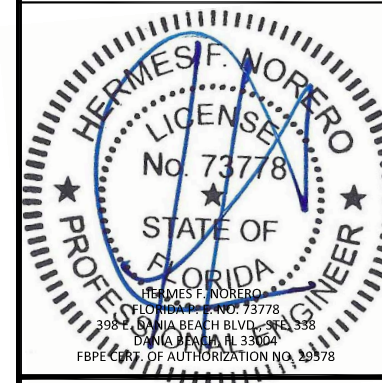
COMPONENTS AND BILL OF MATERIALS

3737 LAKEPORT BLVD.,  
 KLAMATH FALLS, OR 97601  
 PH: (541)882-3451  
 FAX: (541)850-2609



| REMARKS                         | BY | DATE     |
|---------------------------------|----|----------|
| Add ADA sill, Multi-Point Lock, | GL | 06/23/14 |
| Radius Lite & Boxed Sidelite.   |    |          |
| Reference DWG. #A010876A        | AM | 09/11/19 |

THE INSTALLATION DETAILS DESCRIBED HEREIN ARE GENERIC AND MAY NOT REFLECT ACTUAL CONDITIONS FOR A SPECIFIC SITE. IF SITE CONDITIONS CAUSE INSTALLATION TO DEVIATE FROM THE REQUIREMENTS DETAILED HEREIN, A LICENSED ENGINEER OR ARCHITECT SHALL PREPARE SITE SPECIFIC DOCUMENTS FOR USE WITH THIS DOCUMENT.



DATE: 02.05.14

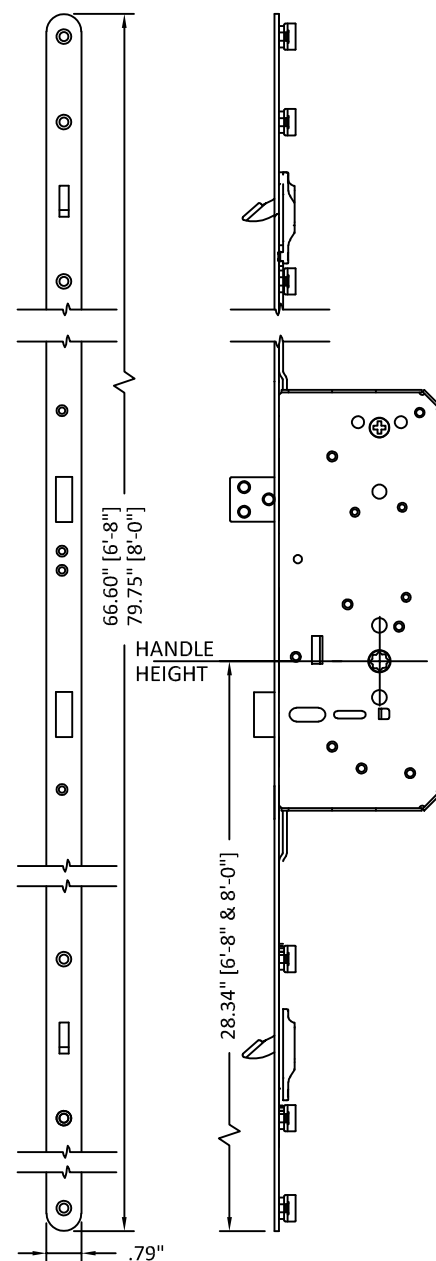
DWG. BY: GL/TJM      CHK. BY: SS/MSS

SCALE: NTS

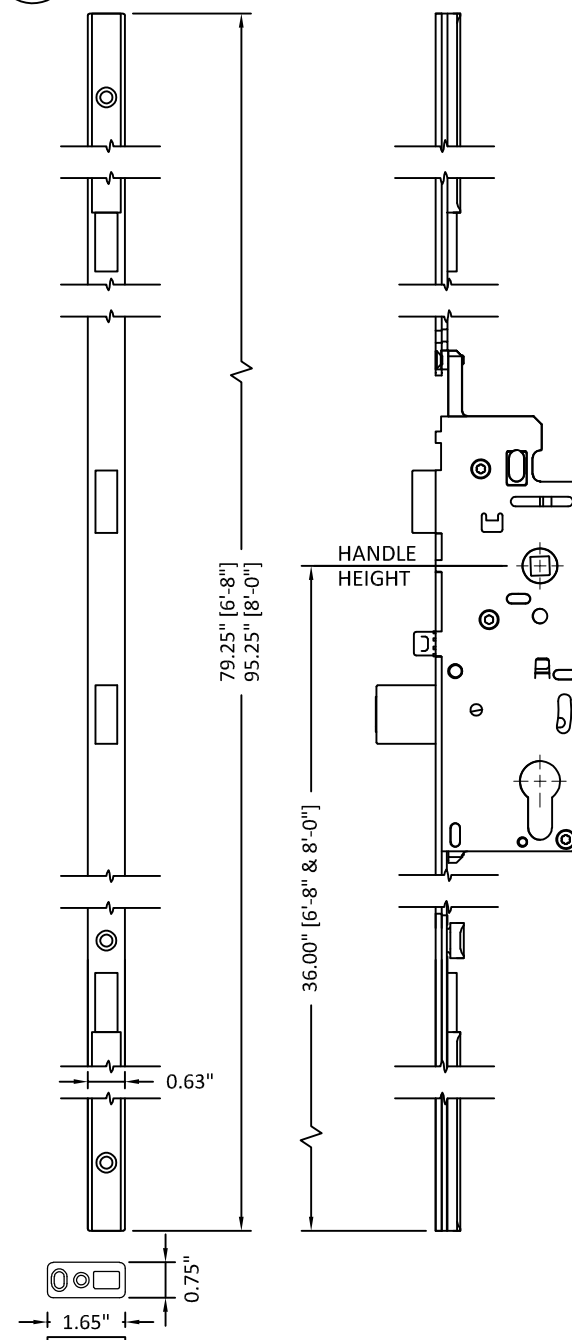
DWG. #: D015707

SHEET: OF11

17 ROCKWELL MULT-POINT LOCK



18 HOPPE MULT-POINT LOCK W/ SILL SHOOT BOLT PLATE #2098911



27 GU SECURY S-BOLT MULTI POINT

